

Electric Quarter Turn Actuator

PSQ1503

1500 Nm

Switching Torque

750 Nm Modulating Torque)¹

60s / 75s / 80s / 90s

Operating Time/90°

Flange

F12, F14 or F16

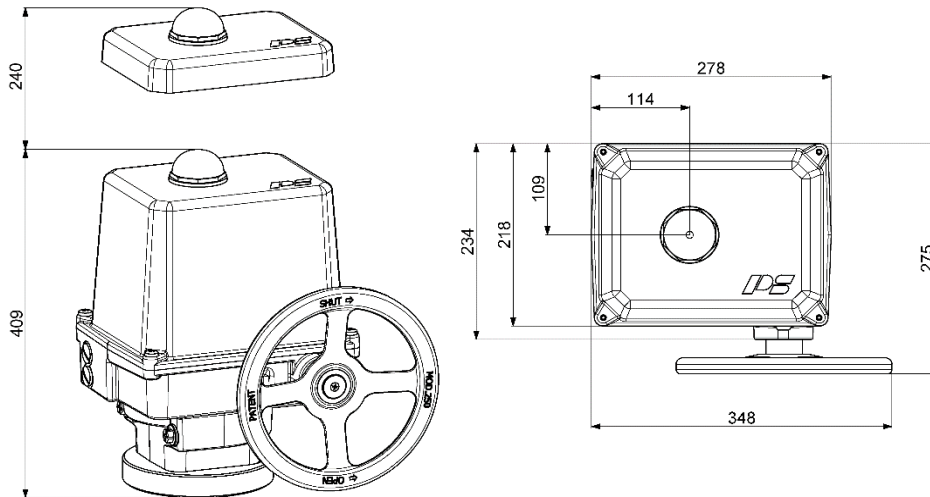
Modulating Actuator

Class C

EN 15714-2

Enclosure IP67

EN 60529



weight: approx. 27 kg without accessories

Operating Time/90°	75 s [50 Hz] / 63 s [60 Hz]	90 s	80 s	60 s	
Power Supply [V]	230 VAC 1~	115 VAC 1~	24 VAC 1~	400 V 3~	24 VDC
Frequency [Hz]	50 / 60	50 / 60	50 / 60	50 / 60	-
Rated Current [A]	0,8	1,7	6,3	0,4	6
Maximum Current [A]	1	2	8	1	50
Power Consumption) ² [W]	180	180	150	180	150
Duty Cycle IEC 60034-1	S2 15min / S4 50% ED @ 1200c/h				
Ambient Temperature [°C]	-20°C to +80°C (S2) / -20°C to +60°C (S4)				
Overvoltage Category	II				
Motor Protection	Thermo Switch) ³				Multifuse

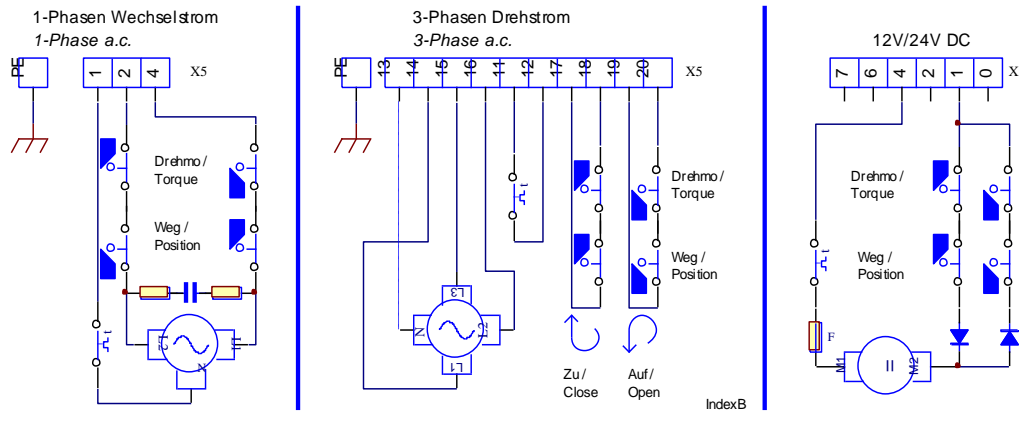
PSQ1503
1500 Nm

)¹ = Permissible average torque over the travel of 90°

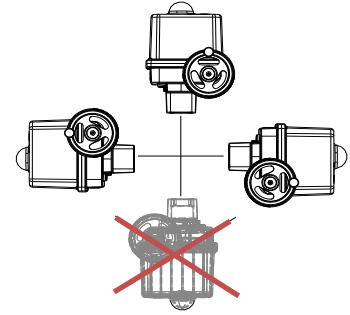
)² = at switching torque and 50 Hz

)³ = Thermo switch must be wired externally at 400 VAC 3~

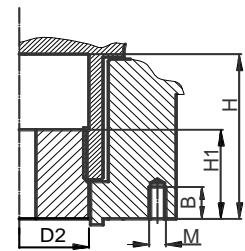
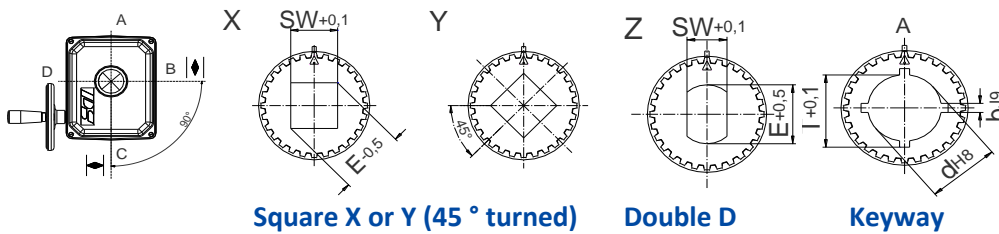
Wiring Diagramm



Mounting Position



Available Drive Bushes



Please check drive bushes datasheet for available sizes!
Other customized drive bushes on request!

	F12	F14	F16
D2	66	66	66
H	80	80	80
H1	46	46	46
M	M12	M16	M20
B	18	28	28

Accessories/ Options	Power Supply	230 VAC 1~	115 VAC 1~	24 VAC 1~	400 V 3~	24 VDC
	Add'l Position Switch 2WE	•	•	•	•	•
	Add'l Position Switches Gold	•	•	•	•	•
	Add'l Torque Switches 2DE	•	•	•	•	•
	Add'l Torque Switches Gold	•	•	•	•	•
	Positioner PSAP	•	•) ⁴	•) ⁴	•) ⁵	
	Position Transmitter PSPT	•	•	•	•	•
	Space Heater HR	•	•	•	•) ⁶	•
	Potentiometer PD	•	•	•	•	•
	Reversing Starter WSM				•	
	Contactors 01					
Corrosion protection K2	Corrosion Protection K2 incl. Heating Resistor					
Increased enclosure IP	IP68) ⁷ incl. Heating Resistor and Corrosion Protection K2					

For more information and accessories, visit our website www.ps-automation.com!

• = available, for further information see respective datasheet

)⁴ = PSAP with external relay required

)⁵ = only to be used with reversing starter contactor

)⁶ = supply voltage 24 V or 115-230 V possible

)⁷ = IP68, no ingress of dust and suitable for continuous immersion in water up to 6 m and 96 h

Subject to changes!