

Valves

Solenoid Valves

5/3-way valves

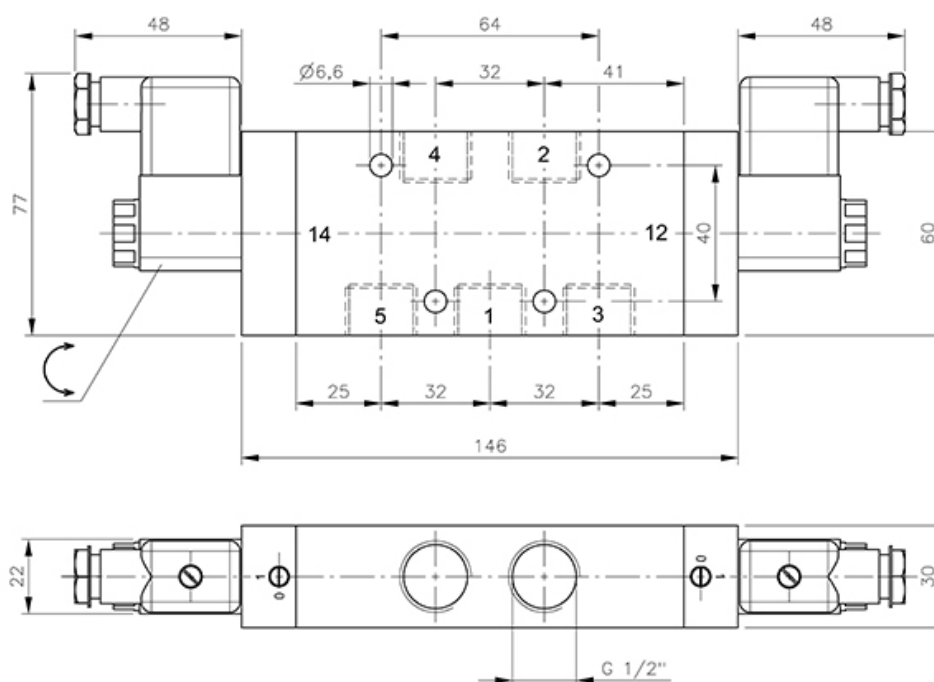
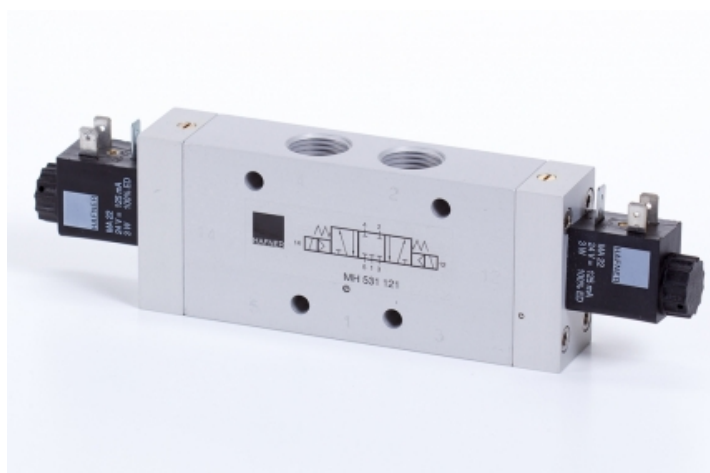
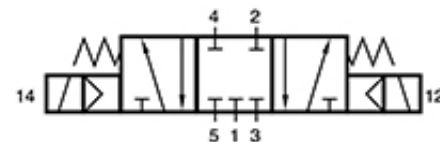
In-line valves

MH | In-line valves

MH 531 121

Solenoid valve | spring return to middle position | with manual override | centre closed

HAFNER



Specifications

Port size	G 1/2"
Air flow	3000 l/min
Operating pressure	1...10 bar
Funktion	5/3-way centre closed
Power consumption	3 W / 5 VA

www.hafner-pneumatika.com