

## Valves

### Solenoid Valves

#### 5/2-way valves

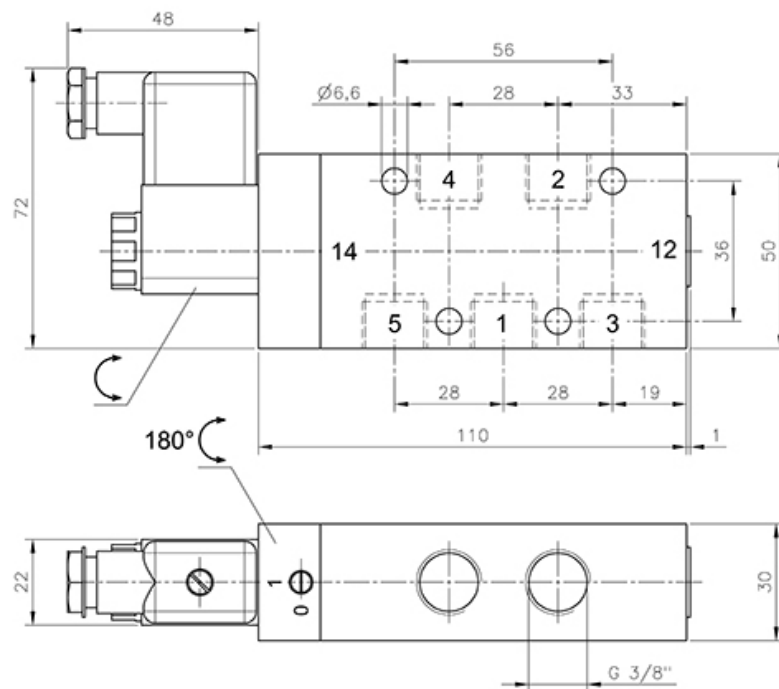
#### In-line valves

#### MH | in-line valves

#### MH 510 101

Solenoid valve | monostable | air spring return | with manual override

HAFNER



**Specifications**

Port size	G 3/8"
Air flow	2250 l/min
Operating pressure	1,5... 10 bar
Funktion	Single solenoid
Power consumption	3 W / 5 VA

[www.hafner-pneumatika.com](http://www.hafner-pneumatika.com)