

# Valves

## Mechanically Actuated Valves

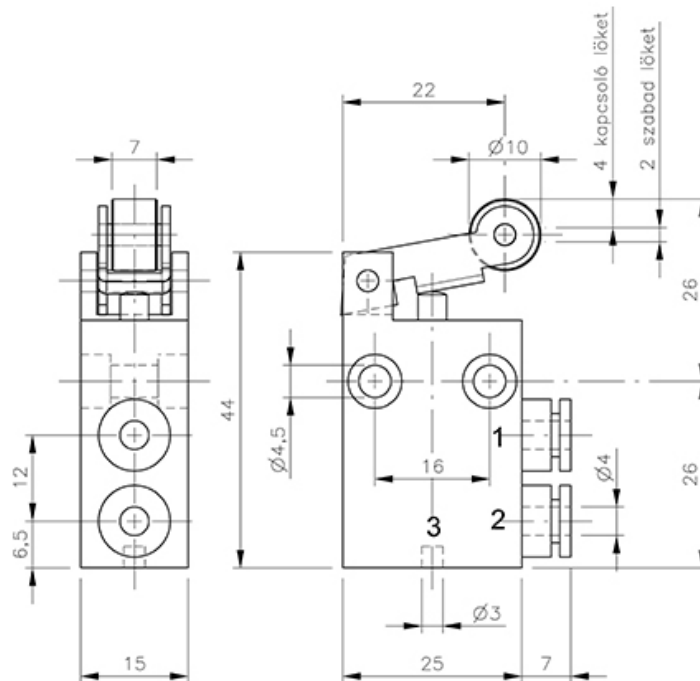
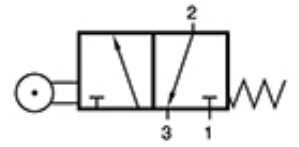
### 3/2-way valves

### Roller lever valves

### BR 311 243

Roller lever valve | monostable | NC | mechanical spring return | push-in fitting

HAFNER



**Specifications**

Port size	Ø 4
Air flow	115 l/min
Operating pressure	-0,9...10 bar
Actuating force	9 N
Function	spring return   NC
Port size / port position	ports on the side   1, 2

[www.hafner-pneumatika.com](http://www.hafner-pneumatika.com)