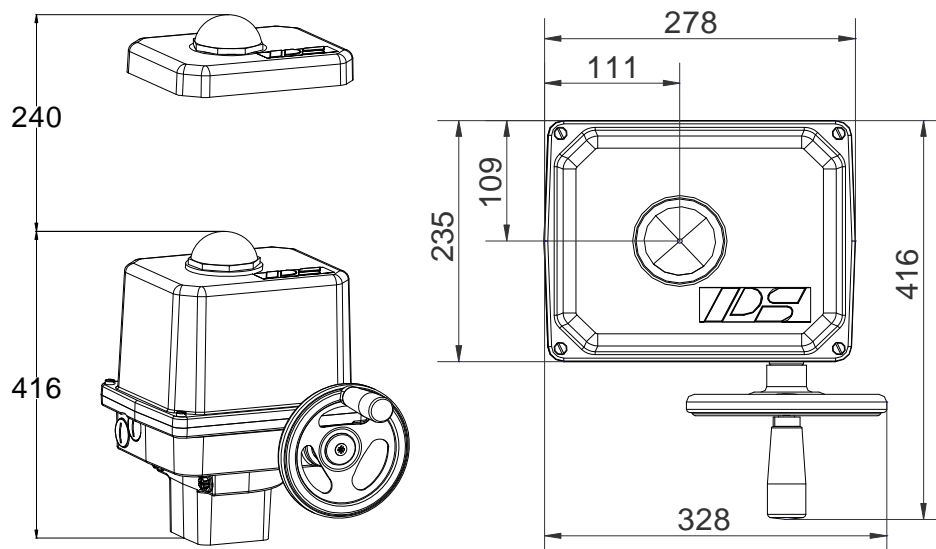


Electric Quarter Turn Actuator

PSQ503



500 Nm

Switching Torque

250 Nm Modulating Torque ¹

29 s - 93 s

Operating Time/90°

Flange

F10 or F12

Modulating Actuator

Class C

EN 15714-2

Enclosure IP67

EN 60529

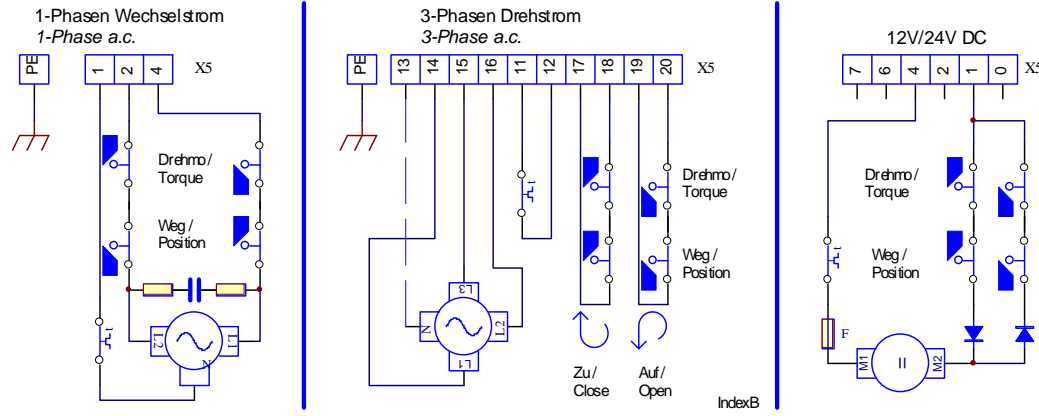
Operating Time/90°	29s [50Hz] / 24s [60Hz]			40s / 34s		PSQ503 500Nm
Power Supply [V]	230 VAC 1~	115 VAC 1~	24 VAC 1~	400 V 3~	24 VDC	
Frequency [Hz]	50 / 60	50 / 60		50 / 60		
Rated Current [A]	0.75	2.5		0.58		
Maximum Current [A]	1	3.7		1.1		
Power Consumption ² [W]	170	265		330		
Duty Cycle IEC 60034-1	S2 15min / S4 50% ED - 1200c/h			see left		
Ambient Temperature [°C]	-20°C to +80°C (S2) / -20°C to +60°C (S4)			see left		
Overvoltage Category	II			see left		
Motor Protection	Thermo Switch ³			see left		
Operating Time/90°	43s [50Hz] / 36s [60Hz]			60s / 50s	43 s	PSQ503 500Nm
Power Supply [V]	230 VAC 1~	115 VAC 1~	24 VAC 1~	400 V 3~	24 VDC	
Frequency [Hz]	50 / 60	50 / 60	50 / 60	50 / 60	-	
Rated Current [A]	0.52	1.1	6.4	0.45	3.8	
Maximum Current [A]	0.95	1.9	9	1.1	33	
Power Consumption ² [W]	120	114	140	220	90	
Duty Cycle IEC 60034-1	S2 30min / S4 50% ED - 1200c/h					
Ambient Temperature [°C]	-20°C to +80°C (S2) / -20°C to +60°C (S4)					
Overvoltage Category	II					
Motor Protection	Thermo Switch ³				Multifuse	
Operating Time/90°	93s [50Hz] / 77s [60Hz]					PSQ503 500Nm
Power Supply [V]	230 VAC 1~	115 VAC 1~	24 VAC 1~	400 V 3~	24 VDC	
Frequency [Hz]	50 / 60	50 / 60	50 / 60	50 / 60		
Rated Current [A]	0.37	0.87	3.5	0.18		
Maximum Current [A]	0.44	1.0	4.2	0.22		
Power Consumption ² [W]	83	98	82	75		
Duty Cycle IEC 60034-1	S2 15min / S4 50% ED - 1200c/h					
Ambient Temperature [°C]	-20°C to +80°C (S2) / -20°C to +60°C (S4)					
Overvoltage Category	II					
Motor Protection	Thermo Switch ³					

¹ = Permissible average torque over the travel of 90°

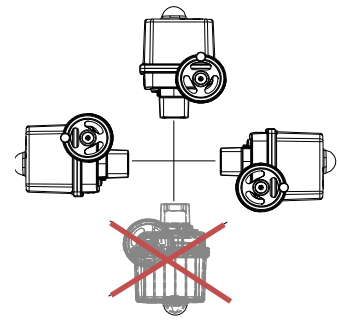
² = at switching torque and 50 Hz

³ = Thermo switch must be wired externally at 400 VAC 3~

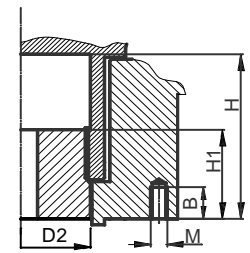
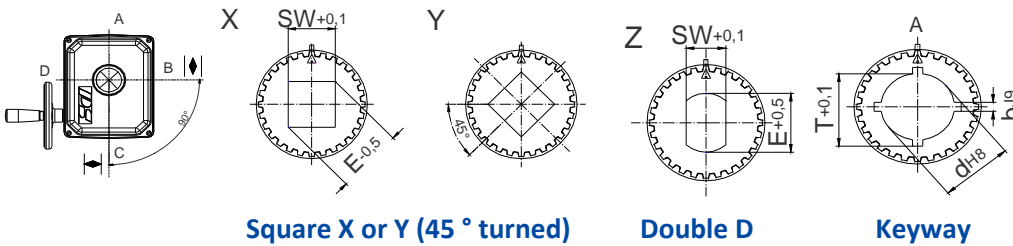
Wiring Diagramm



Mounting Position



Available Drive Bushes



Please check drive bushes datasheet for available sizes!
Other customized drive bushes on request!

	F10	F12
D2	66	66
H	80	80
H1	48	48
M	M10	M12
B	18	18

F10 without centering ring!

Accessories/ Options	Power Supply	230 VAC 1~	115 VAC 1~	24 VAC 1~	400 V 3~	24 VDC
	Add'l Position Switches 2WE	•	•	•	•	•
	Add'l Position Switches Gold	•	•	•	•	•
	Add'l Torque Switches 2DE	•	•	•	•	•
	Add'l Torque Switches Gold	•	•	•	•	•
	Positioner PSAP	•	•) ⁴	•) ⁴	•) ⁵	
	Position Transmitter PSPT	•	•	•	•	•
	Space Heater HR	•	•	•	•) ⁶	•
	Potentiometer PD	•	•	•	•	•
	Reversing Starter WSM				•	
Contactor 01						
Corrosion protection K2	Corrosion Protection K2 incl. Heating Resistor					
Increased enclosure IP	IP68 incl. Heating Resistor and Corrosion Protection K2					

For more information and accessories, visit our website www.ps-automation.com!

• = available, for further information see respective datasheet

)⁴ = PSAP with external relay required

)⁵ = only to be used with reversing starter contactor

)⁶ = supply voltage 24 V or 115-230 V possible

Subject to changes!