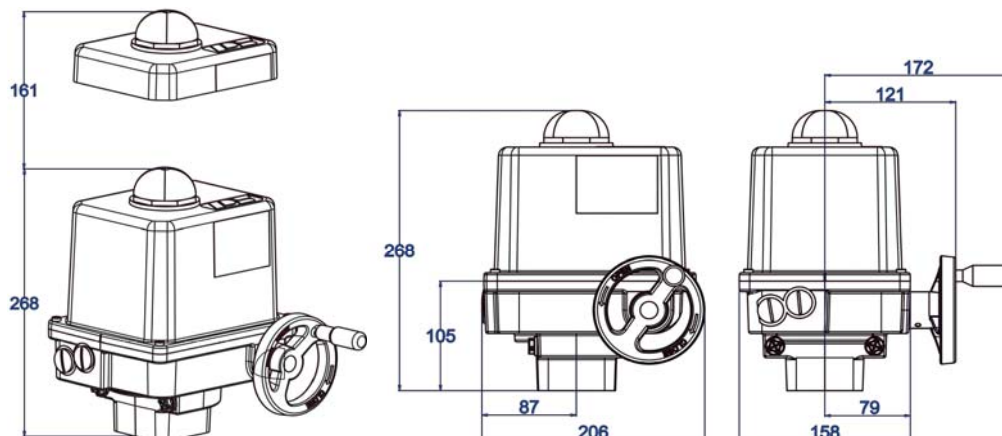


# Electric Quarter Turn Actuator

PSQ-E



**100 Nm / 150 Nm**  
max. Torque

**19 s - 24 s**  
Operating time/90°

**Flange F05 / F07**

Actuator  
**Class C**  
acc. to DIN EN 15714-2

**Enclosure IP67**  
acc. to EN 60529

weight: approx. 6 kg without accessories

Operating Time/90°	23 s [50 Hz] / 19 s [60 Hz]				24 s
Power Supply [V]	230 VAC 1~	115 VAC 1~	24 VAC 1~	400 VAC 3~	24 VDC
Frequency [Hz]	50 / 60	50 / 60	50 / 60	50 / 60	-
Nominal Current [A]	0.12	0.23	1.1	0.047) <sup>4</sup>	0.8
Maximum Current [A]	0.14	0.28	1.3	0.075) <sup>4</sup>	2.8
Power Consumption) <sup>3</sup> [W]	26	27	27	28	19
Duty Cycle IEC 60034-1,8	S2 - 30 min, S3/S4 1200 c/h - 50% ED at 25°C				
Ambient Temperature [°C]	-25°C to +70°C				
Overvoltage Category	II				
Motor Protection	Thermo switch) <sup>1</sup>				Multifuse

**PSQ-E100**  
**100 Nm**

Operating Time/90°	23 s [50 Hz] / 19 s [60 Hz]				24 s
Power Supply [V]	230 VAC 1~	115 VAC 1~	24 VAC 1~	400 VAC 3~	24 VDC
Frequency [Hz]	50 / 60	50 / 60	50 / 60	50 / 60	-
Nominal Current [A]	0.17	0.3	1.44	0.075) <sup>4</sup>	1.3
Maximum Current [A]	0.20	0.36	1.73	0.14) <sup>4</sup>	2.8
Power Consumption) <sup>3</sup> [W]	39	34	34	45	31
Duty Cycle IEC 60034-1,8	S2 - 30 min, S3/S4 1200 c/h - 50% ED at 25°C				
Ambient Temperature [°C]	-25°C to +70°C				
Overvoltage Category	II				
Motor Protection	Thermo switch) <sup>1</sup>				Multifuse

**PSQ-E150**  
**150 Nm**

Standard Equipment					
Add'l Position Switches 2WE	2 additional position switches included (changeover contact) current rating: 1 A inductive, 3 A ohmic; max. voltage: 250 VAC				
Drive Bush	22 mm double square, drawing see back side				
Accessories / Options	230 VAC 1~	115 VAC 1~	24 VAC 1~	400 VAC 3~	24 VDC
Heating HR	•	•	•	•) <sup>2</sup>	•
Potentiometer PD	•	•	•	•	•
Position Transmitter PSPT	•	•	•	•	•

<sup>1</sup> Thermo switch must be wired externally at 400VAC 3~

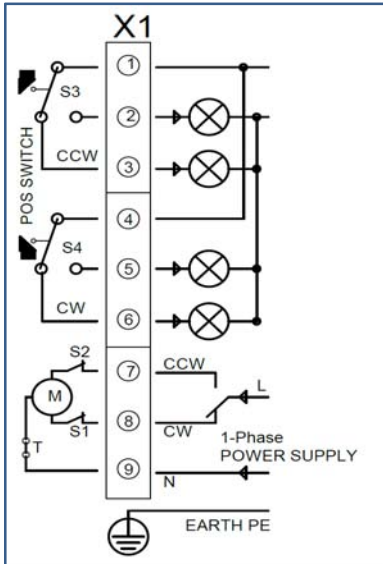
<sup>2</sup> Supply Voltage 24 V or 115-230 V

<sup>3</sup> at max. torque and 50 Hz

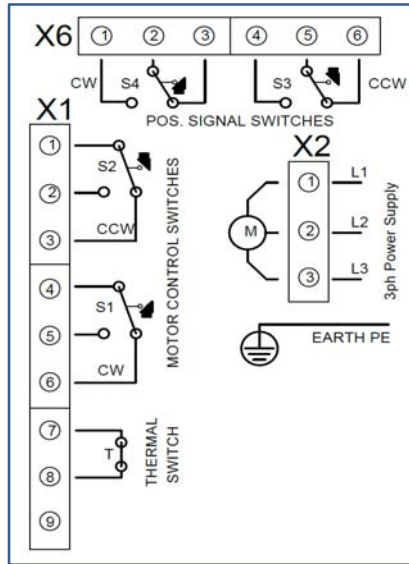
<sup>4</sup> per phase

Electric Wiring Diagram

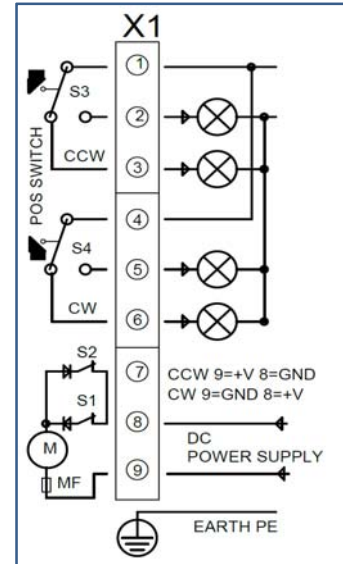
230, 115, 24 VAC 1~



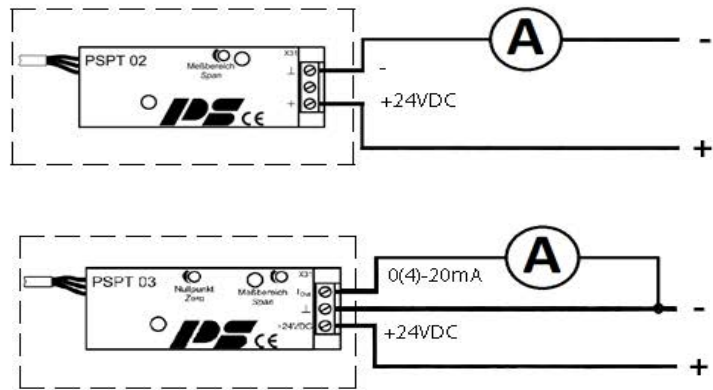
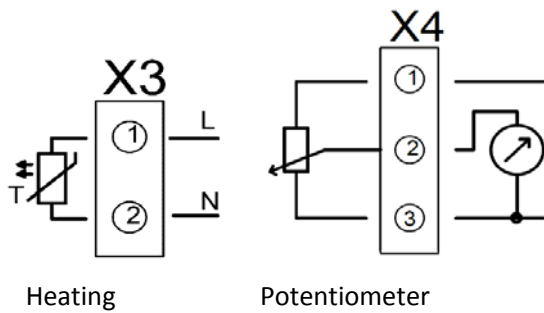
400 VAC 3~



24 VDC

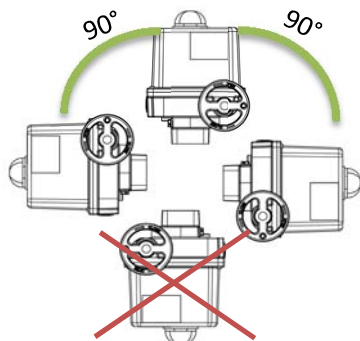


Options



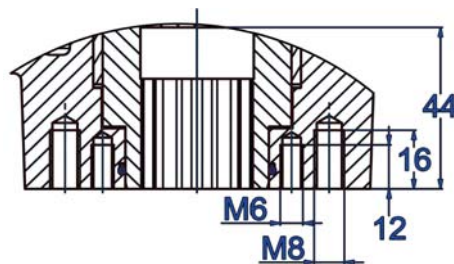
Position transmitter PSPT

Mounting Positions



ISO Flange Dimensions

ISO 5211	F05	F07
----------	-----	-----



Double Square Drive

