

Valves

Solenoid Valves

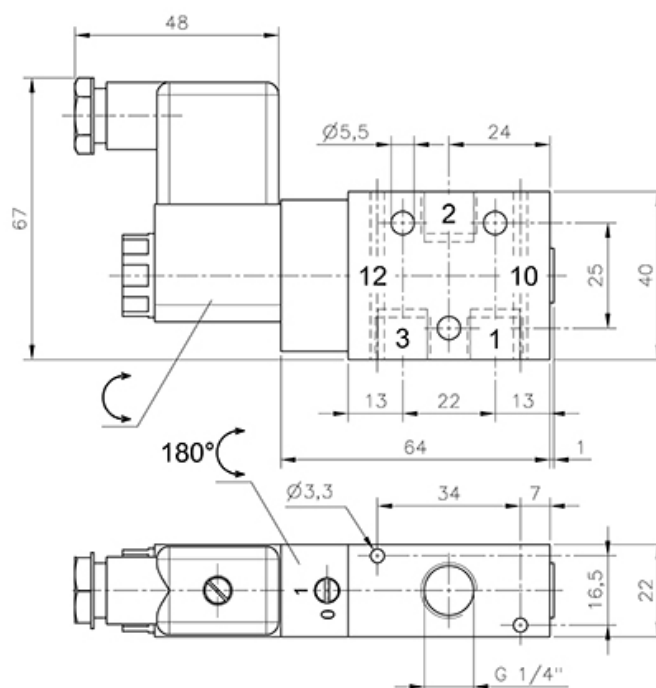
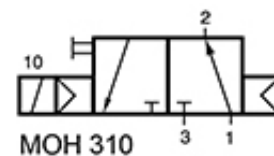
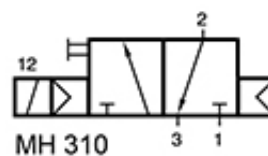
3/2-way valves

G-series | In-line valves / valves for manifolds

MH 310 701 G

Solenoid valve | monostable | air spring return | with manual override | G-series

HAFNER



Specifications

Port size	G 1/4"
Air flow	1250 l/min
Operating pressure	2...10 bar
Funktion	Single solenoid NC
Power consumption	3 W / 5 VA

www.hafner-pneumatika.com