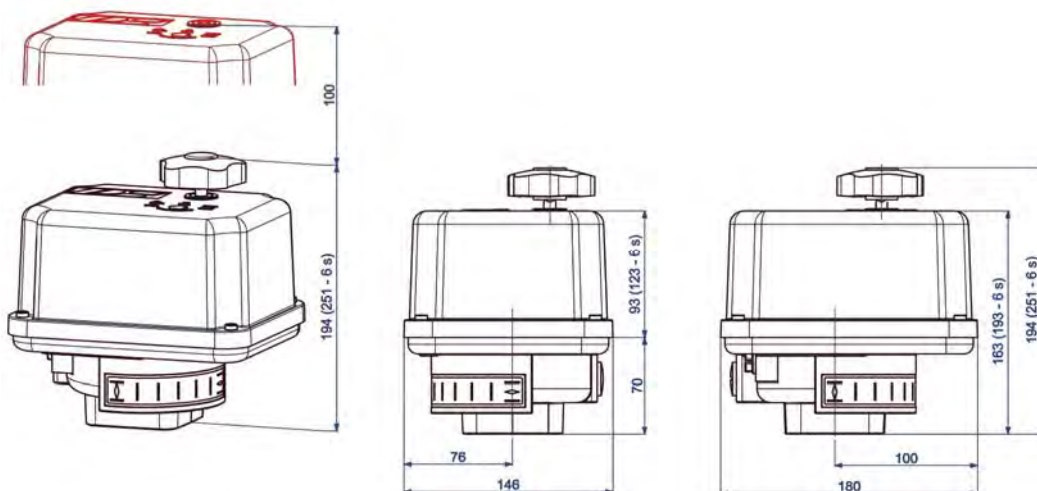


Electric Quarter Turn Actuator



PSR-E50

50 Nm

max. Torque

6 s - 80 s

Operating time/90°

Flange F04 F05 F07*

acc. to ISO 5211

Actuator

Class C

acc. to EN 15714-2

Enclosure IP65

acc. to EN 60529

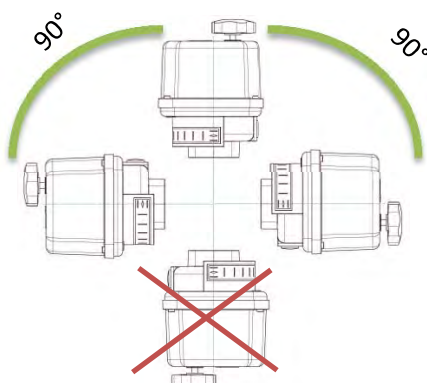
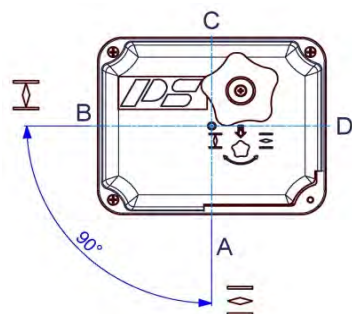
Operating time/90°	6 s [50Hz] / 5 s [60 Hz]				
Power Supply [V]	230 VAC 1~	115 VAC 1~	24 VAC 1~	400 V 3~	24 VDC
Frequency [Hz]	50 / 60				
Nominal Current [A]	0.17				
Max. Current [A]	0.2				
Power Consumption [W]	39				
Operating time/90°	33 s [50Hz] / 28 s [60 Hz]				
Power Supply [V]	230 VAC 1~	115 VAC 1~	24 VAC 1~	400 V 3~	24 VDC
Frequency [Hz]	50 / 60	50 / 60	50 / 60		-
Nominal Current [A]	0.08	0.15	0.8		0.6
Max. Current [A]	0.09	0.18	0.96		1.2
Power Consumption [W]	17 / 23	18 / 20	18 / 23		15
Operating time/90°	80 s [50Hz] / 67 s [60 Hz]				
Power Supply [V]	230 VAC 1~	115 VAC 1~	24 VAC 1~	400 V 3~	24 VDC
Frequency [Hz]	50 / 60				
Nominal Current [A]	0.03				
Max. Current [A]	0.04				
Power Consumption [W]	8				
Standard					
Weight [kg]	2.8				
Duty Cycle IEC 60034-1,8	S2 - 20 min, S3/S4 1200 c/h - 25% ED at 25°C				
Ambient Temperature [°C]	-25°C to +70°C				
Motor Protection	Thermo switch				Multifuse
Add'l Position Switches 2WE	2 additional position switches included (changeover contact) ampacity: 1 A inductive, 3 A ohmic; max. voltage: 250VAC				
Drive Bush	17 mm double square, drawing see back side				
Accessories/ Options	230 VAC 1~	115 VAC 1~	24 VAC	24 VDC	
Heating HR	retrofitable				
Potentiometer PD	retrofitable				
Position transmitter PSPT	PSPT02: 2-wire technology; PSPT03: 3-wire technology, retrofitable				
Adapter for valve shaft	Options on request				

PSR-E50
50 Nm

Equipment

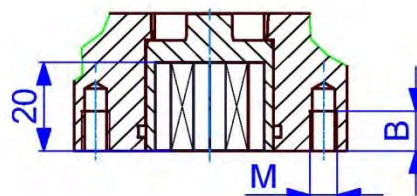
*Flange details see back side

Mounting Positions



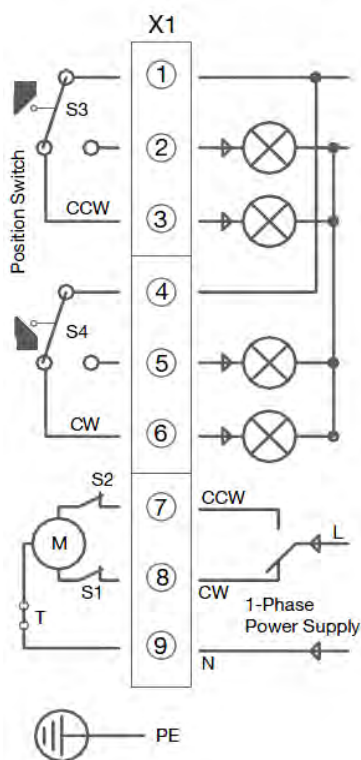
ISO Flange Dimensions

F04/05	F04/07
M5/M6	M5/M8
8/9 mm	8/12 mm

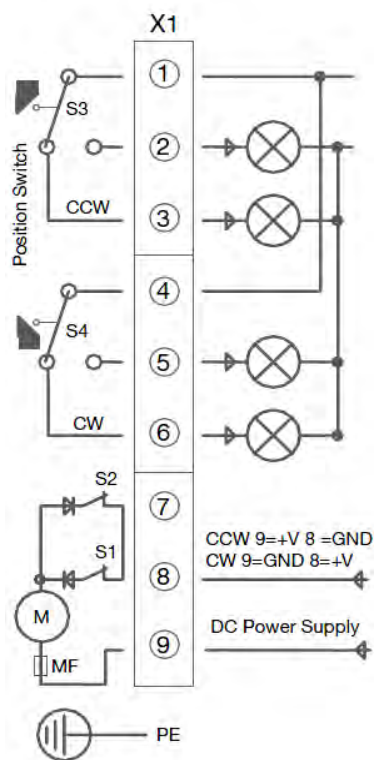


Electric Wiring Diagram

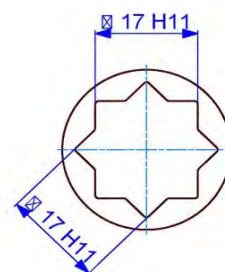
230, 115, 24 VAC 1~



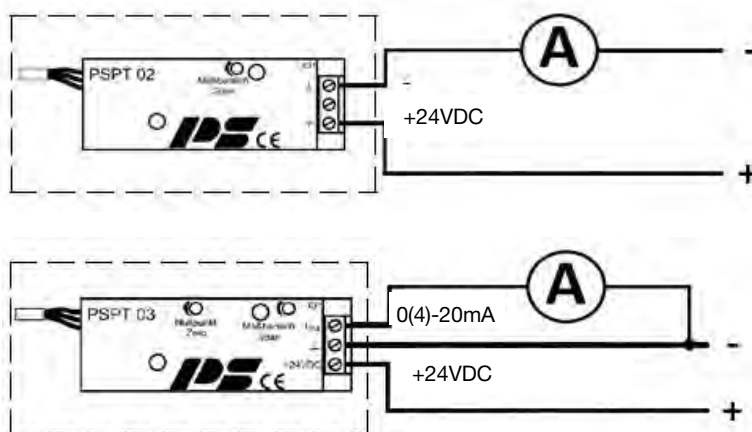
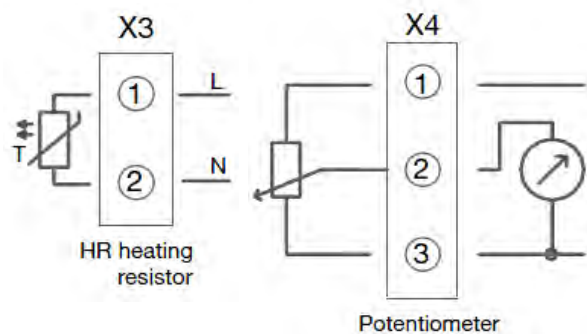
24 VDC



Double Square Drive



Options



Subject to changes!