

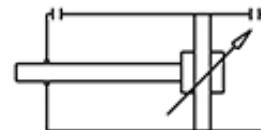
Cylinders

Tie rod cylinders | ISO 15552

DI 160/200

Double acting cylinder | adjustable cushioning | M-series

HAFNER



M-series: Tie rod cylinders according to ISO 15552.

Cylinder without magnetic piston.

Features: adjustable cushioning.

Proximity switches can be mounted to the profile tube with fasteners.

Mounting sizes and accessories according to VDMA 24562.

The fixing nut on the piston rod is part of the delivery content.

Diameter | Ø160 - Ø200 - Ø250 - Ø320 mm

Stroke | 25... 1000 mm, according to the chart below

Other non-standard strokes are available on request.

Medium | Air

Working pressure | 1 ... 10 bar

Temperature range | -20°C ... +80°C

Below 0°C air has to be dried.

Body | Anodized aluminum

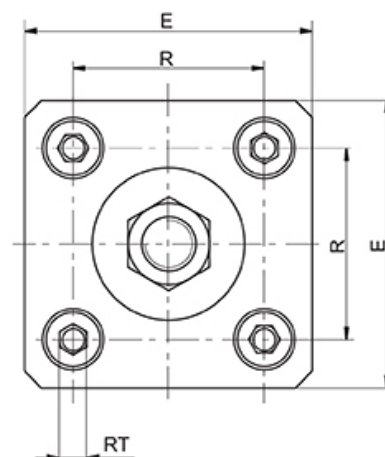
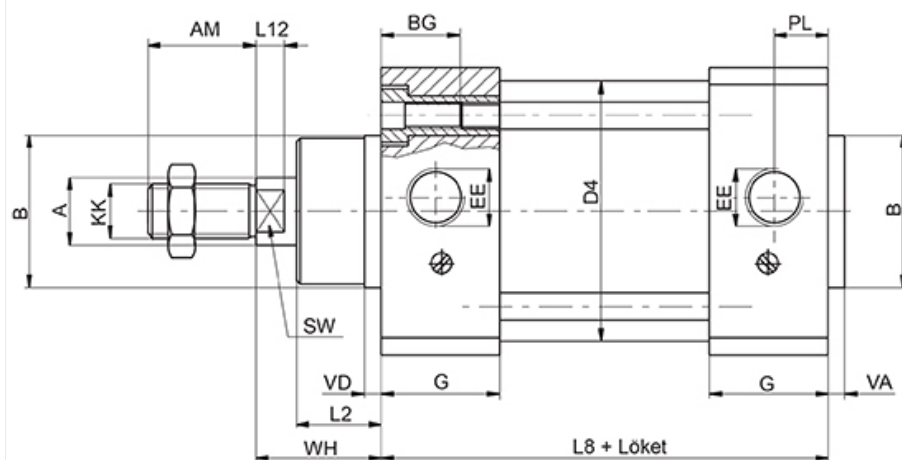
Heads | Die-cast aluminum

Drive piston | Aluminum

Piston rod | Stainless steel

Guide bushing | Sintered bronze

Seals | PUR, NBR



| Type | Ø [mm] | A | AM | B | BG | D4 | E | EE | G | KK | L2 | L8 | L12 | PL | R | RT | SW | VA | VD | WH |
|----------------|--------|----|----|-----|----|-----|-----|--------|----|----------|----|-----|-----|----|-----|------|----|----|----|-----|
| DI 16 0/... | Ø 160 | 40 | 72 | 65 | 24 | 170 | 182 | G 3/4" | 59 | M 36 x 2 | 38 | 180 | 12 | 27 | 140 | M 16 | 38 | 6 | 6 | 80 |
| DI 20 0/... | Ø 200 | 40 | 72 | 75 | 24 | 210 | 222 | G 3/4" | 61 | M 36 x 2 | 55 | 180 | 12 | 35 | 175 | M 16 | 38 | 6 | 6 | 95 |
| DI 25 0/... | Ø 250 | 50 | 84 | 90 | 25 | 264 | 274 | G 1" | 61 | M 42 x 2 | 65 | 200 | 20 | 31 | 220 | M 20 | 46 | 10 | 10 | 105 |
| DI 32 0/... | Ø 320 | 60 | 96 | 110 | 28 | 336 | 352 | G 1" | 63 | M 48 x 2 | 75 | 220 | 20 | 34 | 270 | M 24 | 55 | 10 | 10 | 120 |

Specifications

| | |
|-----------------------|------------|
| Diameter | Ø 160 mm |
| Stroke | 200 mm |
| Connection | G 3/4" |
| Piston diameter | Ø 40 mm |
| Piston diameter, male | M 36 x 2 |
| Operating pressure | 1...10 bar |

www.hafner-pneumatika.com